

1 2 3 4 5 6

A

B

C

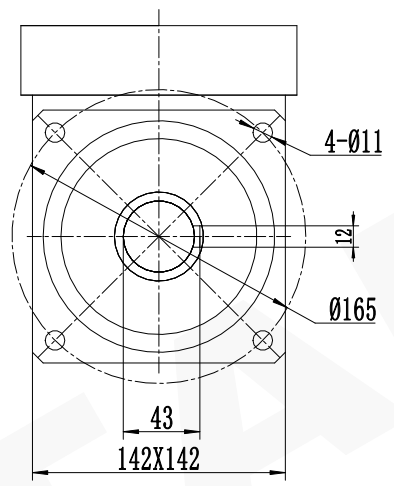
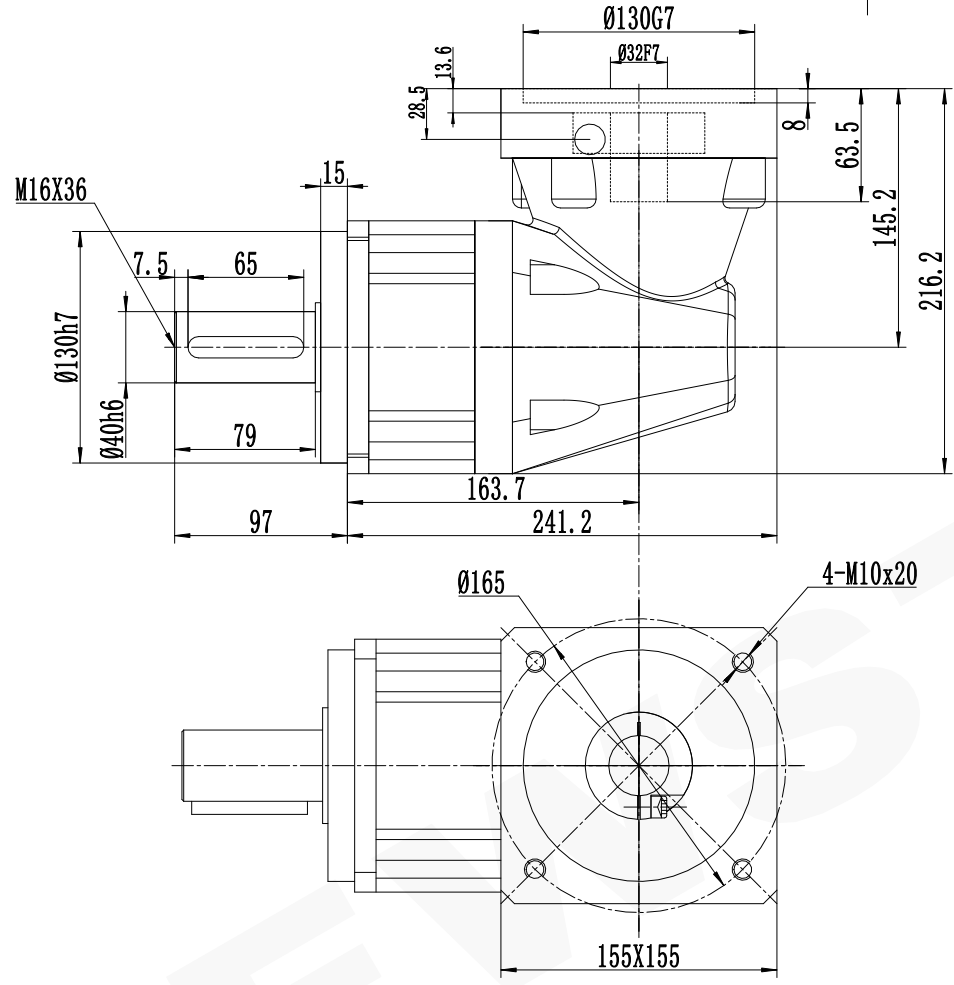
D

A

B

C

D



| | | | | | | | | | |
|-----------------------------------|----|------|------|------|------|------|------|------|------|
| 减速比 (Ratio i) | i | 3 | 4 | 5 | 6 | 7 | 8 | 9 | 10 |
| 额定承载扭矩 (Rated load torque) | Nm | 450 | 700 | 650 | 610 | 540 | 510 | 455 | 455 |
| 最大加速力矩 (Max. acceleration torque) | Nm | 810 | 1260 | 1170 | 1098 | 972 | 918 | 819 | 819 |
| 急停扭矩 (Emergency stop torque) | Nm | 1350 | 2100 | 1950 | 1830 | 1620 | 1530 | 1365 | 1365 |

| | |
|----------------------------------|------|
| 未注线性尺寸极限偏差 Unmarked tolerance | |
| 0.5-3 | ±0.2 |
| 3-6 | ±0.3 |
| 6-30 | ±0.5 |
| 30-120 | ±0.8 |
| 120-400 | ±1.2 |
| 400-1000 | ±2 |

| 精密行星减速机技术参数 | | | | 精密行星减速机 Precision Planetary Gear Boxes | |
|------------------------------|-----------|--------------------------------|--|---|--|
| 容许最大径向载荷 (Max. radial load) | 9600N | 空载力矩 (No-load torque) | | ≤ 0.72Nm | |
| 容许最大轴向载荷 (Max. axial load) | 4800N | 润滑 (Lubrication) | | 合成润滑脂 | |
| 额定输入转速 (Nominal input speed) | 2000r/min | 使用环境温度 (Operation temperature) | | -15℃~+90℃ | |
| 最大输入转速 (Max input speed) | 4000r/min | 使用寿命 (Service life) | | ≥20000h | |
| 噪音 (Noise) | ≤ 70db | 防护等级 (Protection grade) | | IP54 | |
| 回程间隙 (Backlash) | 9arcmin | ABR 系列 | | A. ABR. 142. | |
| | | P2 L1 | | | |
| | | | | Tel/电话: 0533-6288333 6288444 Fax/传真: 0533-6288411 Web/网址: www.newstart.cn | |

1 2 3 4 5 6